

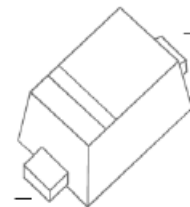


RB521S-40 SCHOTTKY BARRIER DIODE



FEATURE

- Ultra small mold type
- Low V_F
- High reliability



MARKING: S

SOD-523

MAXIMUM RATINGS ($T_a=25^{\circ}\text{C}$ unless otherwise noted)

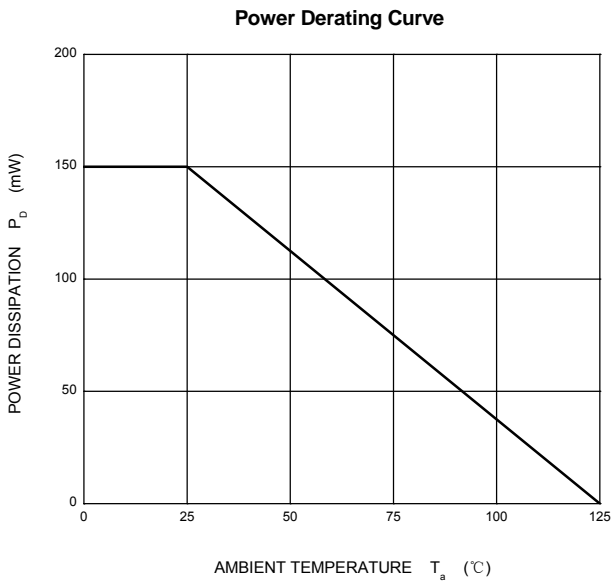
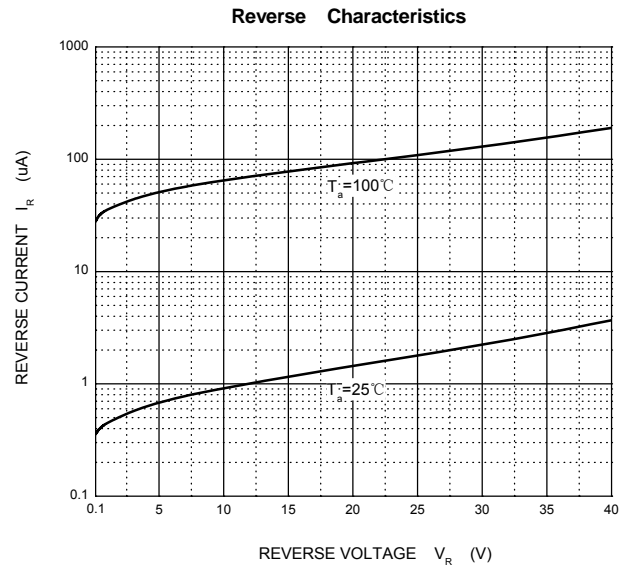
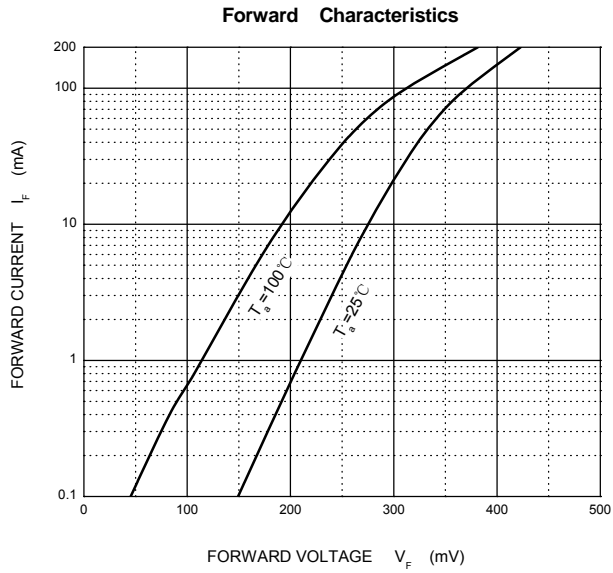
Symbol	Parameter	Value	Unit
V_{RM}	Non-repetitive peak reverse voltage	45	V
V_{RRM}	Peak repetitive reverse voltage	40	V
V_{RWM}	Working peak reverse voltage		
$V_{R(RMS)}$	RMS reverse voltage	28	V
I_o	Average rectified output current	200	mA
I_{FSM}	Non-repetitive peak forward surge current @ $t=8.3\text{ms}$	1	A
P_D	Power dissipation	150	mW
$R_{\theta JA}$	Thermal resistance from junction to ambient	667	$^{\circ}\text{C}/\text{W}$
T_J	Operating Junction Temperature Range	-40~+125	$^{\circ}\text{C}$
T_{stg}	Storage Temperature Range	-55~+150	$^{\circ}\text{C}$

ELECTRICAL CHARACTERISTICS ($T_a=25^{\circ}\text{C}$ unless otherwise specified)

Parameter	Symbol	Test conditions	Min	Typ	Max	Unit
Reverse voltage	$V_{(BR)}$	$I_R=0.1\text{mA}$	40			V
Reverse current	I_R	$V_R=10\text{V}$			20	μA
		$V_R=40\text{V}$			90	
Forward voltage	V_F	$I_F=10\text{mA}$	0.16		0.3	V
		$I_F=100\text{mA}$	0.31		0.45	
		$I_F=200\text{mA}$	0.41		0.54	



Typical Characteristics

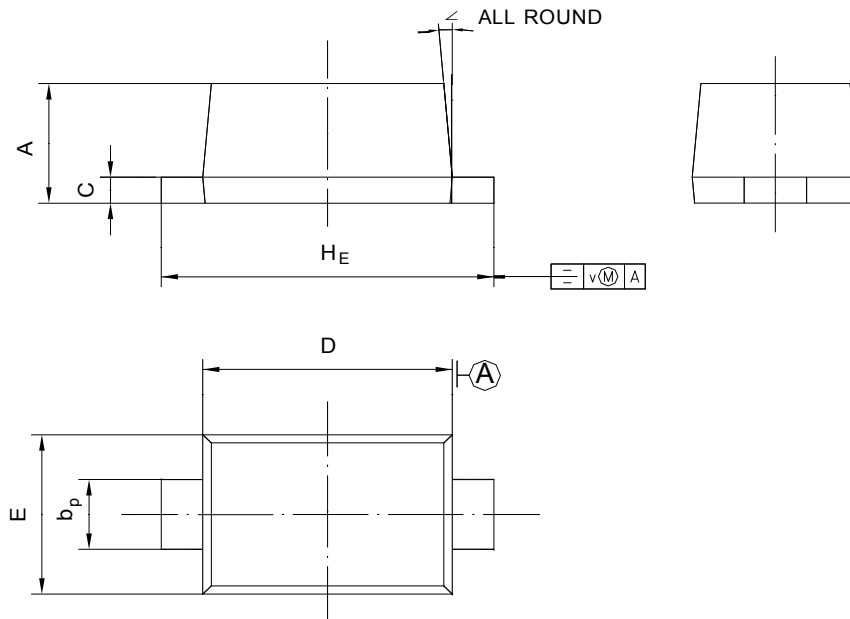




PACKAGE OUTLINE

Plastic surface mounted package; 2 leads

SOD-523



UNIT	A	b _p	C	D	E	H _E	V	∠
mm	0.68 0.58	0.4 0.3	0.135 0.100	1.25 1.15	0.85 0.75	1.7 1.5	0.1	5°